

THE BOXGROVE BUGLE

THE MAGAZINE LINKING CHURCH AND PARISH

Boxgrove Priory, The Priory Vicarage, Church Lane,

Boxgrove, Chichester, PO18 0ED

Phone/Fax: +44 (0)1243 774045

www.boxgrovepriory.co.uk

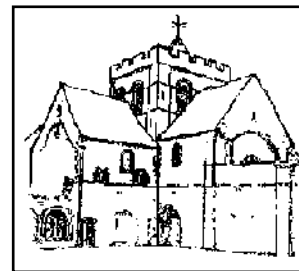
December 2021



INSIDE THIS ISSUE

Who's Who in Boxgrove	2	Boxgrove WI news	14
An Advent Message from Fr Peter	3	There were Shepherds - Sally Morris	15
About <i>The Bugle</i>	4	The benefits of being a	
Services for December & January	5	chain-free buyer - Jennifer Hancock	16
Priory events for your diary	5	November crossword solution	18
Priory Sunday School	6	Restoration of the Priory organ	19
Boxgrove Primary School		Ride + Stride 2021 - report	20
marks Remembrance Day	6	Recipe: Turkey Fricassée	20
The Optimistic Gardener	7	St Wilfrid's Hospice update	21
St Blaise Fair - Saturday 5 February	10	Boxgrove Village Stores & Café	21
Boxgrove Parish Council report	11	4Sight Vision Support - gift ideas	22
Priory Pilgrimage to Walsingham	12	Dementia Support at Sage House	23
Boxgrove & Tangmere Julian Group	13	Priory service times	32
Date for your diary: 'Flower		Useful contact details	32
arranging without Oasis'	13	Chichester Library	32

Who's Who in Boxgrove



VICAR OF BOXGROVE

Fr Ian Forrester, The Priory Vicarage, Church Lane, Boxgrove,
PO18 0ED - 07758 281631 - revdianforrester@hotmail.com

HON. ASSISTANT PRIESTS

Fr Victor Cassam, 195 Oving Road, Chichester - 01243 783998

Fr Peter Bustin, 5 Chichester Drive, Tangmere, PO20 2FF - 07554 353785

Fr Norman Taylor, 7 Guernsey Road, Ferring - 07778 713872

Fr Lawson Nagel, 22 Bishopsgate Walk, Chichester, PO19 6FG - 07539 655868

CHURCHWARDENS

Mr David Bannister - 01243 380155 - churchwardens@boxgrovepriory.co.uk

Mrs Katie Kean - 01243 787884 - churchwardens@boxgrovepriory.co.uk

ACTING HON. TREASURER

Mr David Bannister - 01243 380155 - churchwardens@boxgrovepriory.co.uk

SAFEGUARDING OFFICER

Ms Lara Moyler - 07956 986496

CATHEDRAL LINK

Mr Mike Beaman - 01903 367039 - beaman_mw@yahoo.co.uk

PRIORY AND ST BLAISE CENTRE Bookings & Enquiries

Mr Mark Peters - 07729 773277 - mark@petersposse.co.uk

WSCC MEMBER FOR CHICHESTER NORTH

Mr Jeremy Hunt - 0330 2224536

CDC MEMBER FOR BOXGROVE WARD & CHAIRMAN, BOXGROVE PARISH COUNCIL

Mr Henry Potter - 01243 527312

BOXGROVE C of E PRIMARY SCHOOL

Mrs Jacqui Dommett - 01243 773309 - head@boxgrove.w-sussex.sch.uk

BOXGROVE VILLAGE HALL Bookings & Enquiries

Administrator: Mrs Sally Beckers - 01243 788332 - info@boxgrovevillagehall.co.uk

BOXGROVE VILLAGE STORES & CAFE

Open: **Mon-Fri** 7.30am-5.30pm; **Sat** 8.00am-5.00pm;

Sun 8.00am-2.00pm

Tel no: 01243 773201 - Boxgroveshop@gmail.com

FOR OTHER USEFUL CONTACT DETAILS

see page 32



An Advent Message from Father Peter

"It's the most wonderful time of the year" are the opening words of a popular Christmas song. It could be described as being full of the feelgood factor extolling the joys of Christmas ... and why not? I have no intention of being a Bah Humbug!

However, I would say that I do find the Season of Advent to easily match that description of wonder. The music, readings and themes of expectation and coming which enrich our Liturgy at this time are full of poetic beauty and Christian hope and expectation. We delve into the Old Testament and hear again the message of hope, comfort and peace proclaimed by the Prophets. We see John the Baptist straddling the promises of the Old covenant and the promise of the New in the coming of Jesus; and we wonder with Our Lady and Saint Joseph as they await the miracle of our Saviour's Birth. Added to this is the wonderful music, hymns, antiphons and anthems, which so enrich our worship.



Despite the purple colour of the Priest's vestments and the absence of flowers, Advent does not bear the same seemingly severity of Lent. But rather a calm, reflective and joyful expectancy.

This year hopefully will find us less constrained through the effects of Covid: many are gearing themselves up for an explosion of Christmas celebrations after last year's restrictions, and indeed why not? But also for us let this Advent be a time of reflective joy, with the expectation of the prophets, the strength of the Baptist's belief and the wonder and awe of our Lady and Saint Joseph, so that we might enter fully into the birth of our Saviour.

I pray that our journey through Advent 2021 will prove to be "The most wonderful time of the year"!

God Bless you all,

Father Peter



The Bugle's better on line -
it's in colour and has all the hyperlinks.
http://www.boxgrovepriory.co.uk/boxgrove_bugle.html



I'm afraid for the calendar. Its days are numbered.

THE BUGLE

The Boxgrove Bugle is distributed **free of charge** to each household within the parish and is published [online](#), as well as being sent further afield and being available in the Priory for visitors and non-residents of the parish. The run exceeds 625 copies. The Bugle is not published in January or August.

Articles on any aspect of Boxgrove news - village or Priory-based - are always most welcome. Material to be considered for publication should be sent by the **15th day of the month**, please, to editor.boxgrovebugle@gmail.com for publication on or around the last Sunday of the month. Alternatively, items clearly marked '**Boxgrove Bugle**' may be left in the Vicarage postbox.

DATES 2022

NB: There is no Bugle in January or August

Issue Month	Copy Deadline (January - no Bugle)	Publication Date
February 2022	15 January	30 January
March 2022	15 February	27 February

BUGLE ARTICLES AND CONTENT

Please contact Tina Thurlow - editor.boxgrovebugle@gmail.com

BUGLE ADVERTISING

Please contact Tina Thurlow - editor.boxgrovebugle@gmail.com

ADVERTISING RATES 2022

Per 1/8 page £40.00 per annum £4 per month

Please make cheques payable to:

'Priory Church of St Mary & St Blaise'

Advertisements, flyers, etc are accepted in good faith, but no liability is accepted with regard to any services or goods offered howsoever arising. Nor should material not initiated by Boxgrove Priory be taken to imply endorsement or agreement with views expressed.



**The Boxgrove Bugle
is published by
Boxgrove Priory Parochial Church Council**

© and © 2021

and may be read on-line in colour at

http://www.boxgrovepriory.co.uk/boxgrove_bugle.html

Why not add a link to your desktop?

SERVICES FOR DECEMBER AND JANUARY

DECEMBER

SUNDAY 5

ADVENT 2

8.30am Low Mass

10.30am Community Mass

SUNDAY 12

ADVENT 3

8.30am Low Mass

10.30am Solemn Mass

SUNDAY 19

ADVENT 4

8.30am Low Mass

10.30am Solemn Mass

5.30am Service of Lessons & Carols

FRIDAY 24

CHRISTMAS EVE

9.00am Low Mass

12 noon Confessions

4.00pm Crib Service

11.30pm MIDNIGHT MASS
OF CHRISTMAS

SATURDAY 25

CHRISTMAS DAY

8.30am Low Mass

10.30am Family Christmas Eucharist

SUNDAY 26

HOLY FAMILY SUNDAY

8.30am Low Mass

10.30am Solemn Mass

JANUARY

SUNDAY 2

SECOND SUNDAY OF CHRISTMAS

8.30am Low Mass

10.30am Community Mass

THURSDAY 6

EPIPHANY OF THE LORD

7.30pm Solemn Mass & Blessing of Chalk

SUNDAY 9

THE BAPTISM OF THE LORD

8.30am Low Mass

10.30am Solemn Mass & Renewal of
Baptismal Promises

SUNDAY 16

SECOND SUNDAY AFTER EPIPHANY

8.30am Low Mass

10.30am Solemn Mass

SUNDAY 23

THIRD SUNDAY AFTER EPIPHANY (THE WORD OF GOD)

8.30am Low Mass

10.30am Solemn Mass

SUNDAY 30 - CANDLEMASS

(transferred)

8.30am Low Mass

10.30am Solemn Mass



PRIORY EVENTS FOR YOUR DIARY

5 February 2022 ~ The St Blaise Fair (see p10)

6 - 8 May 2022 ~ Priory Pilgrimage to Walsingham (see p12)

PRIORY SUNDAY SCHOOL

In view of the current rise in Covid cases it has been decided that it would be wise to defer the resumption of the Sunday School until the New Year.

The plan is to meet on each Sunday of the month except the first at 10.20am in the St Blaise Centre, and go over to the Priory for the second half of the service.

Children should be aged between 4 and 11 and they must already have started school. They are asked to arrive promptly, so that the objective of the session can be explained to everyone at once. There is no charge and parents do not need to accompany the children. They don't need to bring anything with them - just to come along!

For further information about our Sunday School, please contact Amy O'Leary by email at Amy.oleary1@outlook.com.

We are looking for more volunteers to support the Sunday School. If you would like to find out more, please contact Amy O'Leary Amy.oleary1@outlook.com.



Remembrance Day Service, 14 November

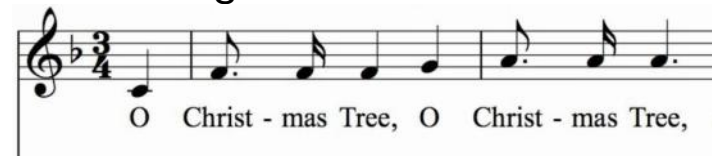
The children of Boxgrove Primary School decorated the Priory on 10 November in readiness for the Remembrance Day Service on 14 November



Please support our advertisers where possible, especially during the current pandemic. They help us to provide a copy of the Bugle free, in 'normal' circumstances, to every household in the parish.

THE OPTIMISTIC GARDENER

High Trees ~ No.48



As always, in order to enjoy to the full all Janet's pictures, readers are encouraged to read this article via the Priory website: <http://www.boxgrovepriory.co.uk/bugle.html>

Time to head for home before it gets too dark! Yes folks - that time of year is here again when we ~~enjoy~~/endure short days and interminable nights. On a recent holiday on the North York Moors in November ("Who goes to Yorkshire on holiday in November?", I hear you ask) we had to be back at HQ by 4.30pm otherwise the local deer population would be leaping out of the wooded roadside in a desperate attempt to head-butt the car. And, with my navigational skills, we were in serious danger of getting well-and-truly lost.

So no wonder people start thinking about Christmas preparations in the middle of September! I have to confess I did buy some Christmas cards in October - but only because I was supporting the local charity, the Aldingbourne Trust, and I wasn't sure when I would be back there. But it is important to prepare for a celebration - the anticipation is as good as the event itself. Long before the advent of Christianity, plants and trees which held on to their mantle of green had a special meaning for people at this time of year. Just as today we decorate our homes with pine, spruce or fir trees, so our forebears hung evergreens over their doors and windows. In some countries it was believed that they would keep away witches, ghosts and evil spirits. Well I certainly haven't been plagued by any witches recently!

But what about that quintessential item which decorates nearly every house in the land as 25th approaches? Yes - the Christmas tree. We all know that Prince Albert popularised the tradition in Britain practised in his homeland - Germany. In fact the Brits had been decorating trees at Christmas for years before Albert took the credit. The tradition of decorating trees began in the Georgian period, when George III's German wife, Charlotte, used to do this for her family in the 1790s.



But did you know that Germany started this tradition as long ago as the 16th century and in fact Martin Luther (Protestant reformer) was supposedly the first to add lighted candles to a tree? Walking towards his home one winter evening, composing a sermon, he was awed by the brilliance of stars twinkling amidst evergreens. To recapture the scene for his family, he erected a tree in the main room and wired its branches with lighted candles. The German fire-brigade was started shortly after this!



From the Victorian era the use of Christmas trees has become a world-wide phenomenon. I had a holiday in Chile in November 2007 and was intrigued to see an artificial tree being erected in a main square of the capital - Santiago. On our arrival it was simply a frame which had a little artificial foliage at the top and a fortnight later when we briefly revisited Santiago it had morphed into the most 'tasteful' advert for Coca-Cola that I have ever seen (really - every bauble was emblazoned with *Coca-Cola*). Eat your heart out Trafalgar Square!

The tree which, since 1947, annually appears in Trafalgar Square is from Norway - a gift to the people of Britain as a token of thanks for the British support to Norway during the Second World War. As keen gardeners you will be pleased to hear that after Twelfth Night the tree is removed, chipped and used as mulch. Another rather pleasing fact (thank you, Wikipedia) is that the very first tree to come from Norway in 1942 was a present to the King of Norway who was in exile here. The stump remaining where this tree was felled, on Hisøy Island, now has a new tree growing from it. What about that for recycling?



Over the years since the Victorian era we have moved from real to artificial trees and now we are moving back to more use of real trees again. But surely this is not very eco-friendly. If you already own an artificial tree the most sustainable thing to do is to continue using it and then, when it becomes too fragile (hopefully in many years to come), to dispose of it. This should be done with the planet in mind.

If you are considering buying a Christmas tree this year and you have no artificial one mouldering in the loft, a better thing to do as far as I can see, is to buy a potted small tree - bring it in and decorate it for Christmas - then re-pot it into a slightly larger container with fresh soil/compost and keep it in the garden - remembering that, as with all pots, it

will need to be watered. Another suggestion is to plant it out in the garden and dig it up again next year. I know! How many of us have the time or backs to do that?

Well now you needn't worry. In this capitalist country we have people who have jumped onto the green-bandwagon and now you can rent your Christmas tree! Scathing as I may be about this, for those with small gardens or none at all it is a sensible idea. Except, after a quick Google search, the nearest place to Boxgrove to hire a tree is in Cheltenham; not a very sustainable piece of Christmas shopping!

When our artificial tree finally drops all its needles I plan to bring in a branch from one of our conifers and use that in place of a tree. I already "deck-the-halls" with evergreens from around the garden, but find increasingly that, by 25th December, there are no holly berries left as the blackbirds have enjoyed them; well, I can't complain about that! In some years we have managed to pick a few branches at the end of November and keep them in a bucket of water in a shed until they were needed nearer decoration time. But at present I have my bucket full of holly (which incidentally had a huge crop of berries this year) sitting outside and I know that come Christmas week the berries will all have fallen off.

And finally the decorations. Well I am quite a sucker for tradition and like to see the same items hanging from the branches for year after year. At my childhood home in Cheshire, we had one Christmas tree bauble which would probably not be sold today for Health and Safety reasons. It was a luminous elephant - completely tasteless and un-Christmassy - but we children loved it. When we were clearing dad's house earlier this year there was a tense moment when, sorting through his decorations (he never threw anything away), we couldn't find the said bauble. It was quite a relief when it finally turned up in a box of paper chains and we agreed, there and then, that we would take it in turns each year to hang it from our Christmas tree!

So, as the daylight disappears at half past three this afternoon, I now have to turn my attention to things other than gardening - spraying cones, making chocolate shapes to hang on the tree and maybe repairing the torn ribbon on Dumbo so he can take pride of place on top of my tree this year.

Janet Reeves



Those who really can't resist having a real tree might like to know about St Wilfrid's Hospice's tree recycling scheme - further details at <https://stwh.co.uk/events/christmas-tree-recycling-2022/>. Ed



ST BLAISE FAIR
SATURDAY 5 FEBRUARY 2022
BOXGROVE PRIORY
12.00 - 2.00PM

Hot refreshments
Tombola ~ Homemade Produce
Raffle ~ 'Miscellaneous' Stall ~ Books
Jewellery ~ Crafts & Collectables
Morris Dancers

Proceeds in aid of the
[Kwa Mkono Disabled Children's Centre, Kwa Mkono, Tanzania](#)



Books for the St Blaise Fair
Advance Notice



After Christmas we will be collecting
books, CDs and DVDs
to sell at the St Blaise Fair in February
in aid of
Kwa Mkono Children's Hostel



Please phone **01243 532065** in January
for delivery or collection arrangements



Tim Pullan



If you are enjoying reading the Bugle and would like to receive notification when future editions are available on the Priory website, please email the editor at editor.boxgrovebugle@gmail.com.

BOXGROVE PARISH COUNCIL

Parish Council report



The Parish Council met once again on 1st November as a hybrid meeting. Three Councillors attended remotely together with Jeremy Hunt, our County Councillor, and five members of the public.

A meeting had been held that afternoon with WSCC Highways engineers to consider the flooding in Tinwood Lane. This seems to have been exacerbated since the works took place at the junction of Tinwood and the A285. It was decided that something must be done to alleviate the problem and it is likely that funding for this will come from WSCC's Watershed Budget, to which a Application will be made.

The progress of the Children's Play Area scheme was noted and we await the actual date of commencement from the Contractor. The lack of the erased white lining at the new Roundabout at Crouch Cross Lane was discussed, and since then this has been undertaken and completed, at the same time as the repair to the length of pavement on the west side of The Street just south of the Village Store - which, sadly, was broken into on Tuesday night and I've since learned that three other shops were targeted on the same night. Times, I'm afraid, are a-changing, so we must be more vigilant of these increasing crime figures. We are no longer living in the safe, relatively crime free area we all once enjoyed.

Jeremy Hunt indicated in his report that with luck and continued reasonably good weather the A285 through Duncton should be open to one-way, light-controlled traffic in mid December. Regretfully, the narrow lanes through Barlavington which have been used as a detour have been wrecked by passing traffic, and WSCC. have agreed that this will need some emergency repair work once the main road is reopened.

It was noted that the broken and missing posts and railing to the fencing between the playing field and the VH Car Park had been rectified with great expediency by the contractor; sometimes stuff does get done quickly!

The Queen's Platinum Anniversary of her Accession to the throne was discussed. The Queen's Pageant Master has been notified of our intention to light a Beacon on Halnaker Hill in June and we are once again being offered a grant from CDC of £250 towards the cost of any celebrations. Street parties could benefit from this for those who wish to be involved.

There is also a scheme to plant as many trees as possible to mark the occasion as well as to help support the climate change aspirations of the CC movement.

During public question time it was mentioned that there was a certain amount of enthusiasm for a Christmas Tree this year. To this end, permission has been requested of the Trustees of the Almshouse to place the tree in the grassed courtyard adjacent to the flagstaff. As I write, this formal permission hasn't yet been received but I remain hopeful. Solar powered light will be used to decorate the tree, together with other decorations. The excessive litter on the grass verges after recent mowing was discussed, particularly with reference to the A27, which, of course, is a Trunk Road which should be the responsibility of National Highways but in fact CDC Contract Services are responsible, and a letter from CDC in response to the PC's letter

/continued ...

highlighting our concern clearly explains this anomaly. It costs CDC circa £50,000 per annum to litter-pick just the seven miles of A27 between Emsworth and Fishbourne: clearly something needs to be done to address this burden on local taxpayers, but this will need to come from Central Government.

A number of Planning Applications were discussed, and the most significant one was to crown-lift and remove some branches from the Holm Oaks which severely overhang The Street and the properties nearby. In addition, the safety of the historic flint wall is of great concern. Similar Holm Oaks were recently dealt with successfully in Halnaker opposite the Anglesey Arms, again preserving the historic flint wall.

The two Information Boards arrived early in the month and have been erected, one at the new car park to the Windmill Trail and the other at the northern end of the VH car park. Being an entrance to the Southdowns National Park, the board at the Windmill Parking Area was very kindly financed by the Park Authority, whose input into the design, together with our own input, was greatly valued.

The next meeting of the Parish Council is to be on Monday (always Mondays) the 6th December.

Henry Potter
Chairman of the Parish Council



PRIORY PILGRIMAGE TO WALSINGHAM



Covid lockdowns and restrictive protocols have meant that the Parish pilgrimage to Walsingham in both 2020 and 2021 could not proceed. Pilgrim groups have now returned to Walsingham and I am pleased to tell you that a booking has been made for The Priory for the **weekend of 6-8 May 2022**.

Our previous pilgrimages have been in September and October, so it will be lovely to be there in May with longer days and spring in the air.

There are limited places available, so if you would like to join us please let me know as soon as possible. If you have not been on pilgrimage to Walsingham before and would like to know more about it, please do not hesitate to speak to me in church or on 07720 889187.

Walsingham has not yet published the tariff for 2022 but I expect this to be available in November, at which time I will let you know the cost of the weekend. It is probably worth mentioning that the deposit will be only £30 per person with the balance payable in April 2022.

David Jones



If April showers bring May flowers, what do May flowers bring? Pilgrims.

BOXGROVE & TANGMERE JULIAN GROUP MEETINGS 2021-2022

The Boxgrove & Tangmere Julian Group has been meeting in thought (at home) through lockdowns on the second Monday of each month at 3.15pm (previously at The Priory Church of St Mary & St Blaise, Boxgrove). Notices confirming details of meetings are placed on the church noticeboard.

As some concern and distancing continues, and due to uncertainty of meetings, members could perhaps give time each Monday to reading the Psalm. The themes for the first three Julian meetings in the current season are as follows:

13 Dec 2021	Psalm 81, v 1 <i>Sing we merrily unto God our strength</i> (The Book of Common Prayer)	To be advised - Boxgrove
10 Jan 2022	Psalm 16, v 8 <i>I have set the Lord always before me: because he is at my right hand, I shall not be moved</i> (St James translation of The Holy Bible)	To be advised - Boxgrove
14 Feb 2022	Psalm 48, v 13 <i>For this God is our God for ever and ever : he shall be our guide unto death</i> (The Book of Common Prayer)	To be advised - Boxgrove

*May our dear Lord, who has given us the Psalter and the Our Father, and taught us how to pray them, grant us also the spirit of grace and supplication, that we may with delight and resolute faith truly pray without ceasing, for thus it behoveth us.
He has commanded it and desires that we should.
To him be praise and honour and thanksgiving.*

(A prayer by Martin Luther from The Reverend Beryl Rundle)



Merle Lomas wishes all her friends in Boxgrove a very Happy Christmas



! SAVE THE DATE !

Flower arranging without Oasis

A workshop to be held on
Saturday 12 February 2022

at 10.00 a.m. in the Priory

More details to follow

NEWS FROM BOXGROVE WI



We celebrated our 102nd birthday this month. It's wonderful to think that the WI has kept going in the village through thick and thin for all this time. During WWII the women made jam for the war effort. They used their spare fruit and fruit from the hedgerows and were given a special allowance of sugar. The WI also started cooking mid-day lunch for the school children to make sure they had one good meal a day. An industrious lot, the WI ladies!

This year we made cupcakes for a competition. They all looked delicious and very pretty. To everyone's delight, one of our new members won. In fact, we have welcomed four new members in recent months, which has given us a real lift. Our Programme Secretary, Jill Dipple, organised a very good quiz which got our little brain cells working. Lynnette Middleton won by a hair's breadth. We also heard from members about memorable birthday celebrations. Gale's 40th sounded a riot, with a crowd of male friends providing the entertainment, first dressed as nuns to acknowledge her education in a convent school. Then they threw off their habits to reveal they were dressed as school girls! They danced, pranced and sang to everyone's enjoyment. What a lovely birthday party she had.

Our party was a little more staid, but we still enjoyed ourselves. We had time to chat and mingle and plan our next WI lunch dates - The Black Horse at Binsted in November and The Anglesey Arms for our Christmas Lunch in December. Getting out and about is an important part of what we do.

The Book Group will be discussing *The Giver of Stars* by Jojo Moyes this month. It's always a pleasant way to spend a morning - talking about the book and all the thoughts that spin off from it. It always amazes me where a discussion can lead. We have coffee and cake (of course) and it keeps the social wheels of the village turning.

Our next meeting is the 8th December, 2.15 pm at the St Blaise Centre. Do come and join us.

Best wishes to you all.

Wendy Austin

Secretary, Boxgrove WI
01243 773563 / 07947 946538
wendyaustinward@gmail.com



CHICHESTER CATHEDRAL

The Cathedral is open to visitors Monday-Saturday (10.00am-4.00pm) and Sunday (10.00am-2.00pm). The Cathedral's website has [Guidance on Visiting](#) (including advice on Coronavirus regulations) and details of both [services](#) and [events](#).

There is no charge for services and it is necessary to [book tickets](#) for the **Sunday Eucharists only**. There is a charge for some events, which may be paid when booking online.



There were Shepherds ...



As usual, we gathered brushwood before darkness
To make a fire to keep wild beasts away.
We took it in turns to sleep, wrapped in our cloaks,
Lulled by the crackling of the burning sticks,
And now and then a bleat or tonking bell
As the sheep dozed. I must have dropped off too.

It was the light that woke us - such a light!
Brighter than sunlight, colder than the moon.
A tall man stood beside us, by the fire
And he was shining with that brilliant light.

We were more astonished than afraid;
The man said 'Don't be scared; I bring good news,
For you, for everyone. Down in the village,
A child has been born tonight, who will be King.'
We all looked at each other in amazement -
And knew that it was true.

And then the sky
Was suddenly full of other shining men
Dancing and singing, dazzling the stars.
A glorious sight, yet strangely peaceful too.

Then they were gone; we didn't need to speak,
Just rounded up the sheep and headed off
Towards the village. We knew where to go,
A broken-down old shed behind the pub.

We crowded round the door and peered inside,
Not wanting to disturb the three of them.
But the man smiled at us and waved us in,
So in we trooped, smelling of dung and woodsmoke,
Leaving the sheep outside.

The girl, so young,
Gazed at her baby with astonished joy;
And the child itself, clear-faced and open-eyed,
Looking right at us, shone with light and love.

After a lifetime's staring, we crept away -
The patient, silent sheep still huddled there.
By then daylight had come; the whole world looked new,
And we felt somehow taller, and warm inside.
We hurried to tell everyone we met,
But whether they believed us, I don't know.



The benefits of being a chain-free buyer

*By Jennifer Hancock,
Director at Property Acquisitions*

The fiercely competitive West Sussex property market has caused property owners to see the benefits of being a chain-free buyer. If they are able to purchase a home without the need to sell another, they would be considered one. Many require a mortgage still, but the best purchasers we deal with are cash rich.



Since the beginning of the pandemic, my clients have all been chain-free. This is a vast change to pre Covid-19, where chain-free buyers were only half. I believe we are seeing a change now because competition for good quality country houses in sought-after villages has gone from strength to strength. In the thirty plus years that I have been in the industry, I have not seen anything quite like it. In order to strengthen their position, therefore, buyers are realising they become very attractive to sellers if they do not need to sell first or raise funds, putting them at an advantage over other purchasers.

Here are a few reasons why sellers prefer chain-free buyers ...

Less risk of the sale falling through

Having a buyer pull out of a sale is a seller's worst fear. It is hugely stressful and causes everything to fall apart. With one in four property sales falling through in the UK, it's of no surprise they feel this way. If a buyer doesn't need to sell in order to proceed with the purchase of another property, this means the risk of them having to pull out is minimised, putting them in good stead in the eyes of a seller.

Shorter property transactions

Intense demand combined with Covid delays and everybody rushing to make the various stamp duty holiday deadlines has caused a huge backlog for pushing properties through to completion. If somebody is buying chain-free, however, this does help shorten the process. In fact, research has found chain-free buyers can reduce the conveyancing process by as much as eight weeks!

/continued ...

Less stress

Moving home is supposed to be the third most stressful thing anybody can do. Having a chain-free buyer is a generally a less stressful option for a seller, as the sale is pretty much guaranteed to progress without much delay, and with minimal risk of falling through.

--o0o--

It's therefore very tempting for a seller to accept an offer from a chain-free buyer, especially one who has the cash rather than relying on raising a mortgage.

There are further benefits for buyers, too. Purchasers tend to be in an enhanced position to negotiate on price. I have had many occasions where sellers have actually accepted my clients' offers even though they weren't the highest bidder. This was because they presented themselves as a less risky proposition. Also, stress levels are reduced because buyers don't need to worry about selling their property in order to proceed with their purchase.

Jennifer Hancock

*For more information about buying a home
in and around Chichester, contact me on
+44 7776452128 or visit www.propertyacquisitions.co.uk*



Are you interested in gardens, gardening and growing?

Would you like to learn more?

**And to meet like-minded friendly people from a
neighbouring village?**

Then, you'd enjoy

LAVANT HORTICULTURAL SOCIETY

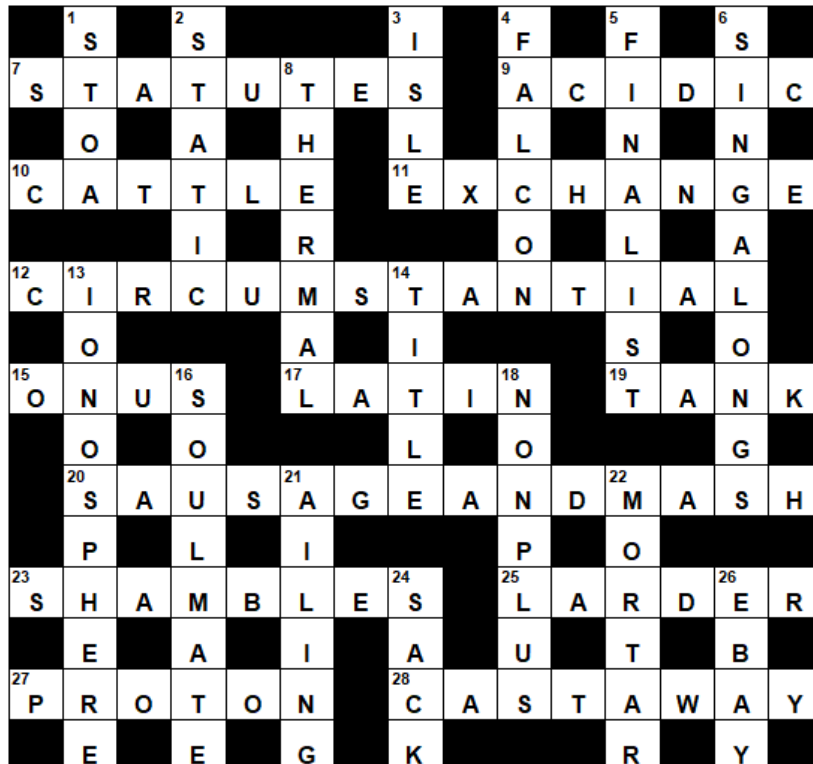
We have a varied programme, meeting monthly in Lavant Memorial Hall with some online meetings too. We also have shows/competitions and garden visits.

To learn more about us, visit our website

lavanthortsoc.org.uk

or find us on Facebook, or phone 01243 527217

Solution to the crossword puzzle in the November Bugle



St Joseph's, Hunston Road, Chichester, PO20 1NP

Tel: 01243 537934 ~ Email: admin@stonepillow.org.uk

<https://stonepillow.org.uk/>

Please continue to leave any non-perishable food you can spare in our bin just inside the inner doors of the church.

We welcome gifts, including furniture and electrical goods, at the Restore Shop in Terminus Road (Stonepillow Restore, Unit 3, Plot 27, Terminus Road, Chichester PO19 8UE; Tel: 01243 698547; restore@stonepillow.org.uk. We can collect larger items if needed.

We are also looking for volunteers who don't mind getting stuck in and sorting our donations; this will enable us to make the best use of them. So many people have so much experience which would be very welcome ...!



What did the sea say to the beach? Nothing - it just waved.



Did you know that whenever you buy anything online - from your weekly shop to your annual holiday - you could be raising free donations for Boxgrove Priory with [easyfundraising](https://www.easyfundraising.org.uk/causes/boxgrovepriory/?utm_campaign=raise-more)?

There are over 4,500 shops and sites on board ready to make a donation - including Waitrose, Sainsbury's, Tesco, Amazon, eBay, Argos, John Lewis, Laithwaites Wine, Booking.com, M&S, the AA and the RAC to name but a few - and it won't cost you a penny extra to help the Priory raise funds.

All you need to do is:

1. Go to https://www.easyfundraising.org.uk/causes/boxgrovepriory/?utm_campaign=raise-more, and join for free.
2. Every time you shop online, go to easyfundraising first to find the site you want, and start shopping.
3. After you've checked out, the retailer will make a donation to Boxgrove Priory at no extra cost to you whatsoever!

There are no catches or hidden charges, and the Priory will be really grateful for your donations.

Thank you for your support.



IT'S TIME TO OVERHAUL (REBUILD) THE PRIORY ORGAN

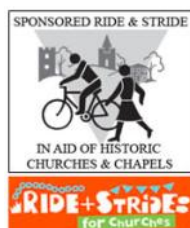
The organ in Boxgrove Priory is small but beautiful. It's astonishingly versatile and, over the years, has provided the 'soundtrack' to thousands of services. But it is now in need of some TLC.

The plan is to dismantle it and take sections of it to the Organ Builder's workshop. Once there, it will be cleaned very thoroughly and all the leatherwork will be renewed. Then, returned and rebuilt in the Priory, it will serve us again, well into the future.

It costs money, of course, and we still need to raise about £15,000 for the work. Can you please help us?



Ride & Stride 2021



This year's Ride + Stride took place on Saturday 11 September. Following the review meeting which took place on 20 November it is expected that the event will have raised **£40,000** this year. As of 20 November, £34,200 was held, and with another couple of weeks before the books are closed, plus the Gift Aid (of say £4,000), they expect to be very close to that total.

Team Priory raised £101, and is very grateful to all those that very kindly sponsored them.

WELL DONE, ALL PARTICIPANTS AND HELPERS!

In the current circumstances, this was a fantastic result, and the organisers say they hope to do even better next year!

www.sussexhistoricchurchestrust.org.uk/sussex_ride_and_stride



TURKEY FRICASSEE

Use any leftover turkey to make this mouth-watering meal. Serve with pasta, mashed potatoes or rice.

Ingredients

- 50g butter
- 100g chestnut/button mushrooms, quartered
- 1 tbsp plain flour
- 100ml white wine/dry sherry
- 200ml chicken/turkey stock
- 150ml double cream/creme fraiche
- 800g leftover boneless cooked turkey, chopped into chunks
- Chopped parsley (optional)

1. Heat the butter in a deep frying or sauté pan until sizzling, then add the mushrooms and fry for 4-5 mins until softened. Sprinkle over the flour and stir until a paste forms; cook for a few more mins.
2. Pour in the wine/sherry and let it bubble for a minute, then stir in the stock and bring to the boil. Reduce the heat to a simmer and stir in the cream. Season, then stir in the turkey.
3. Simmer until the turkey is heated through, then remove pan from the heat and stir in parsley (if used).

ST WILFRID'S HOSPICE

Walton Lane, Bosham, PO18 8QB

Tel 01243 775302 <https://stwh.co.uk>



St Wilfrid's Christmas Cards

Our charity Christmas cards are now on sale now in all twelve of our shops and on our online eBay store at www.ebay.co.uk/str/St-Wilfrids-Hospice-Chichester. There are eighteen different festive designs.

Light Up A Life 2021

This December, you are invited to remember loved ones with us at our traditional annual remembrance event held on 5 December at 6pm. This year a service will be broadcast on Facebook @stwilfridschichester and via YouTube. A limited Light Up A Life Event will also take place at Chichester Cathedral that night, though by invitation only due to Covid protection measures in place.



BOXGROVE



VILLAGE STORES & CAFE

We know that some of you are not able to leave home at the moment to shop for essential items, so we are offering a home delivery service to residents of Boxgrove and local villages.

Minimum order is just £5 to qualify for free delivery. Please call for full details of our delivery areas.

Call **01243 773201** during our opening hours (Monday-Friday 7.30-5.30; Saturday 8.00-5.00; Sunday 8.00-2.00) to order fresh fruit and vegetables, groceries, deli goods, bakery and dairy items, cakes and home baked goods and cleaning products.

We have daily deliveries of fresh produce and groceries so we will do our very best to fulfil your order, but some items may be subject to availability.

Payment will be taken by card over the phone and we'll advise you of an approximate time for delivery by one of our team or a friendly local volunteer.

Please call us if we can help - we look forward to being of service.



For details of [V2 Radio](http://www.v2radio.co.uk)'s inaugural 'Christmas Toy Appeal', please follow this [link](https://www.v2radio.co.uk/local/christmas-toy-appeal/) or visit <https://www.v2radio.co.uk/local/christmas-toy-appeal/>

Christmas Gifts For All From 4Sight Vision Support

4Sight Vision Support has a range of great value Christmas cards and gift ideas including many designed for those living with sight loss and vision impairment. All are sold in aid of the charity which provides specialist services for blind and sight impaired adults and children across West Sussex.

Christmas cards are available with a variety of seasonal and fun designs. They are sold in packs of ten with a large print message inside reading 'Merry Christmas and a Happy New Year'. They are selling fast and the order deadline is 13 December.

For those who enjoy walking, a book of thirty-five rambles in the stunning Sussex countryside marks the tenth anniversary of the 4Sight Vision Support Ramblers Group. 'Short Rambles in the Sussex Countryside and Days Out' by Jane Aston features walks carefully documented and designed to be suitable for everyone who likes a shorter walk, including those with sight loss or vision impairment.

An ideal stocking filler is a special limited edition pin badge which celebrates the Charity's 100th anniversary this year. The design features a daisy, which was chosen as it has a special connection to sight - its name comes from 'the day's eye', or 'the eye of day'.

Gifts specifically for those with vision impairment include two large print calendars: the Big Print Wall Calendar and the Big Print Foldaway Calendar, which can be hung on a wall or kept folded like a book. Diaries include an A6 VIP Pocket Diary with perforated corners to help keep track of pages, a Big Print Desk Diary and a Big Print Pocket Diary 2022. In addition, board games include Easy-to-see Dominoes, Large Print Scrabble, Large Print Playing Cards and Jumbo Print Playing Cards.

For further details, pricing information or to place an order, please call the Team pm 01243 828555 or email enquiries@4sight.org.uk.



THE ALDINGBOURNE TRUST



Christmas at Aldingbourne

There's lots going on this Christmas at the Aldingbourne Trust. Visit their website to see what's available - a personalised letter from Santa, a Christmas Meal or Afternoon Tea in the Quarry Café, Breakfast & Dinner with Santa ...

<https://www.aldingbournetrust.org/christmas.html>

Aldingbourne Country Centre, Blackmill Lane, Norton, Chichester, PO18 0JP
Country Centre - 01243 542075 ~ Central Office - 01243 544607

Dementia Support's Christmas Double Up Campaign

Last year, Dementia Support raised over £40,000 during the festive season. This year they aim to raise £80,000 between midday on the 30th of November and the 14th of December with their Christmas Double Up Campaign. They need your help to raise money to support their vital services by donating to double your donation, double your impact and double the support.

The money donated in these two weeks will be match-funded by a Christmas Champion, doubling the impact your donation can have on the lives of those living with dementia. So, your £5 donation becomes £10, £50 becomes £100, and £250 becomes £500. Every penny raised will help Dementia Support to support those living with dementia, as well as their loved ones and carers throughout their whole dementia journey. They offer free advice and support through their Wayfinding service, respite care, activity sessions and health and wellbeing services, such as hairdressing and assisted bathing at their hub, Sage House, to help people to live well with dementia.

To donate from the 30th of November, visit www.dementiasupport.org.uk. For more information contact fundraising@dementiasupport.org.uk or call the Fundraising Team on 01243 958460.

If you would like more information about any of the services offered at Sage House, please call 01243 888691 or visit their [website](http://www.dementiasupport.org.uk).

Sage House, City Fields Way, Tangmere, Chichester, PO20 2FP
Tel: 01243 888691 ~ Email: info@dementia-support.org.uk
Web: www.dementia-support.org.uk
Charity No 1158640 ~ Company No 9044373



Please remember ...

**if you have any unwanted sewing machines, carpentry,
garden or engineering tools**

Tim Pullan and Malcolm Knight collect such items for 'Tools with a Mission' and 'Tools for Self-Reliance' respectively to be despatched to Africa to help families and individuals to start or expand their business.

Contact

Tim Pullan
on 01243 532065

and

Malcolm Knight
on 07722 115212

They can arrange to collect

Podiatry & Chiropody

'for all your foot care needs'



- Nail cutting service
- Corns & hard skin removal
- In-growing toe nails
- Verrucas
- Insoles

- Diabetic foot care
- Sports injury management
- Fungus nail treatment
- Bunions
- Reflexology

Sophie Gooley BSc MChS
Podiatrist—HCPC Registered

Mobile: 07710 773539
Local Clinic and Home Visits

The home buying experts for West Sussex

Established in 2003 with over 30 years' experience, enviable contacts and in-depth market knowledge, we offer our clients discerning independent advice acting on their behalf as their dedicated property buying agent. We are the best-kept secret in West Sussex.

jh@propertyacquisitions.co.uk
01243 531 133

jh. Jennie Hancock
Property Acquisitions

THE BOXGROVE

PHYSIOTHERAPY & REHABILITATION CLINIC

Your Local Clinic for
**PHYSIOTHERAPY
PODIATRY & CHIROPODY
CLINICAL MASSAGE**

01243 696630

When booking please
quote 'BUGLE BOX'
for a £10 discount
on your treatment.



**BUGLE
BOX**

The Old Granary, The Street, Boxgrove, Chichester, PO18 0ES
01243 696630 info@theboxgrove.com

KEVIN HOLLAND FUNERAL SERVICE

Independent Family Business

24 Hour Personal Service

Private Chapel of Rest

Parking Available

Golden Charter Pre-Paid Funeral Plans

Arrangements may be made from the comfort of your own home

Golden Charter
Funeral Plans 

246 Chichester Road

Bognor Regis

PO21 5BA

Tel: 01243 868630

www.kevinholland.co.uk



hancock

Letting & Estate Agents

Make yourself at home

Buy, sell or let with an independent
estate agent – established since 1991

Lettings 01243 531111

Sales 01243 531155

office@hancockpartners.co.uk

Hancock and Partners


5 Northgate, Chichester PO19 1BA



- Flowers for all special occasions
- Wedding and event floristry specialist
- Large selection of fresh flowers always available
- Order service available
- Local, national and international delivery service
- Seasonal workshops, e.g. Christmas Wreaths

 janewalkerforgeflowers.co.uk

 forgeflowers@gmail.com

 01243 788484

 Stane Street, Halnaker, Chichester, PO18 0NQ



The Society presents its next lecture on

**Tuesday 25th January at 2 pm
at Boxgrove Village Hall**

Why Roy Lichtenstein Matters

*An insight into one of the most
influential Pop Artists to
emerge in America in the 1960s*

For information:

www.tasboxgrove.org.uk

or Elaine, tel: **01243 555644**

New members and guests very welcome

HELEN'S

AIRPORT CARS LTD

Find out about us - and book online

www.airporttaxi.co.uk

01243 820 820

Extremely Competitive Rates

Head Office: 24 Sudley Road, Bognor Regis, PO21 1ER



Walberton Place Care Home

If you're thinking about a care home you'll find a warm welcome at Walberton Place. Family run, our care is the kind we would want all of our loved ones to receive. Our new home is luxurious and beautifully furnished, with clean, light and airy spaces for residents to relax and enjoy life. We welcome guests at any time, so come and meet our fantastic staff and residents, have a cake in our cafe or chat over a drink in our very own pub.

- Person-centred dementia care
- Tailored meaningful activities
- Luxury en-suite bedrooms
- Daily fine dining
- Themed pub
- Hair salon



01243 928 217




www.countrycourtcare.com



Yapton Lane, Walberton, Arundel, West Sussex, BN18 0AS

INDEPENDENT HAIRDRESSING

PROFESSIONAL HAIRDRESSER
30 YEARS' EXPERIENCE

——
CALL TRACY ON
01243 537623 or 07534 870272



Ridea Technology

www.ridea.co.uk

Need help with your technology?

For sourcing of or assistance with
your Computer, Tablet, Internet
and home Audio/Visual equipment:

Tel: 01243 216121 / 07970 291302

E-mail: help@ridea.co.uk

I B Electrical Services

Est 2003

'NAPIT' approved electrician
All works guaranteed & insured
Reasonable rates and local

Call Ian on 07873 358855



Edge Brickwork

Brickwork, Flint work, Stonework,
Paving and Repointing Specialist

Tom Robertson - 07798 635354
Email: EdgeBrickwork@hotmail.com



offers a bespoke domestic and commercial
architectural design service covering:
Free Initial Consultation ~ Concept & Design
Development ~ Planning Applications ~
Building Regulations Approval

"空"

Visit our website www.kuuarchitecture.com
call us on 07775 968067 or
email info@kuuarchitecture.com

Let's talk about your project



LANDGIRLS

Tree, Hedge & Garden Services.

Holly Redford-Wilson.

N.P.T.C. Qualified & Fully Insured.
01243 870705 / 07474 872910

Tree Surgery, Stump Grinding & Hedges.
Fencing, Pressure Washing & Maintenance.
Checkatrade Member I.D. 90736



AGRICULTURAL PROJECTS
COMMERCIAL
INDUSTRIAL
HOME

FABRICATION & WELDING
STRUCTURAL STEEL
BLACKSMITHS
MACHINING



UNIT 9, WOODHORN BUSINESS CENTRE, OVING
E: sales@mjengineeringsussex.com
W: www.mjengineeringsussex.com
T: 01243 527400

Chichester Chamber Concerts

Season continues in Spring 2022

World class musicians are appearing at

*The Assembly Room, North Street,
Chichester, PO19 1LQ*

24th February

Chiaroscuro Quartet

Music by Purcell, Haydn & Beethoven

10th March

**Chiaroscuro Quartet with
Matthew Hunt & Friends**

Mozart Clarinet Quintet and
Schubert Octet

--o0o--

Tickets £18, under 25s free,
available from Chichester Festival Theatre
online at www.cft.org.uk and
by phone 01243 7811312

Latest news and more information at
www.chichesterchamberconcerts.com



THE MARTIN SEWELL
BUILDING COMPANY

An award-winning Chartered Building Company that has worked in the Sussex area since 1985, gaining a well-deserved reputation for professionalism, reliability, high quality craftsmanship & project management skills.

Experienced in all types of building projects, from large commercial to the sensitive renovation of listed buildings, bespoke new-builds or extensions & refurbishments.

Telephone 01243 542056
Email martin@msbc.uk.com
www.msbc.uk.com



Please continue to support us, with tinned veg and fruit, sponge

puddings, tinned fruit, tinned meat, rice, tinned potatoes/instant mash, tinned rice pudding/custard

Visit the [website](#) for details of food donation points, opening hours, etc, or call **01243 773687**.



THE SAINT BLAISE CENTRE BOXGROVE

The Saint Blaise Centre is available for hire at very reasonable rates and offers a comfortable environment with fully-equipped kitchen

**Enquiries/bookings please contact
Mark Peters - 07729 773277**

A.S.A.P.

Removals & Storage Ltd

- Removals
- Storage
- Packing
- Clearance
- Nationwide Service
- Fully Insured

Call 01243 781819 or 0800 002 95 45
www.asapremovals.co.uk
enquiries@asapremovals.co.uk



Proud members of
Checkatrade.com
Where reputation matters



Painter & Decorator

Locally based
Est. 2000
Interior & exterior projects
Competitive prices

**For a free Estimate
call Dominic on:
01243 533685 - 07939 248788
domnuke@hotmail.co.uk**

Peter Roberts

Chartered Tax Adviser CTA ATT
PR Personal Tax

Formerly a Tax Adviser for a local leading firm of Chartered Accountants for many years, now a sole practitioner providing

- Personal self-assessment tax return completion
- Personal Tax Reviews
- General personal Tax compliance
- Quick, efficient and personal service including home visits at no extra cost

01243 773580 · 07939 819364
prpersonaltax@btinternet.com
www.prpersonaltax.co.uk

DAVID DOYLE

GARDENING SERVICE

Local, reliable,
RHS-trained gardener.

Lawn mowing, weeding,
planting, trimming,
general pruning.

Based in Boxgrove

075 21187 827
01243 784060

The Old Coach House, 14 West Pallant, Chichester, West Sussex PO19 1TB

01243 523723

chichester@todanstee.com
todanstee.com

Tod Anstee

Chichester

Your parish, your property... our passion

Tod Anstee is an independent company with a strong local history providing our clients with the widest market exposure and a highly proactive approach to selling and letting. Sam has unrivalled knowledge of the parish having spent over 20 years living in the village of Boxgrove.

Call for free marketing advice from our residential sales and lettings team in Chichester.



Sam Tod
residential sales
partner



Ros Healey
residential lettings
letting partner

sales & lettings | residential | country houses | development | land | new homes | property management

PRIORY SERVICE TIMES

Sunday	8.30am	Low Mass
	10.30am	Solemn Mass
Monday	9.00am	Low Mass
Tuesday	10.00am	Low Mass with short homily (followed by coffee)
Wednesday	12.00pm	Low Mass
Thursday	9.00am	Low Mass
Friday	12.00pm	Low Mass
Saturday	9.00am	Low Mass

Confessions heard by appointment.

On the first Sunday of the month at the 10.30am Mass the setting of the Ordinary (Kyrie, Gloria, Creed, Sanctus, Benedictus and Agnus Dei) will normally be congregational, with anthems and motets sung by the choir. There will not be Sunday School on that day (please see page 6 for Sunday School arrangements).

We will review these arrangements in December. In the meantime, readers are advised to check service times on the Priory [website](http://www.boxgrovepriory.co.uk/worship.html) (<http://www.boxgrovepriory.co.uk/worship.html>), as it is necessary from time to time to amend them.

You are encouraged to attend the services in person; however, if you prefer you can still 'join in' the Mass from the Priory, 'live' or at a time which may be more convenient for you, via the Parish [Facebook](#) page.



Useful contact details

Local Police

Emergencies 999 or 112
Other matters 0845 60 70 999 or 101

Citizens Advice

Consumer helpline 0345 4040506

Action on Elder Abuse

Confidential helpline 080 8808 8141

Action Fraud

National fraud reporting centre
0300 123 2040



Chichester Library

Tower Street, Chichester
Telephone 01243 777351
(Renewals 01243 642110)

OPENING HOURS

Monday-Friday 9.00am - 6.00pm
Saturday 9.00am - 5.00pm
Sunday closed

Please check opening hours and refer to the customer charter for what to expect when visiting:

<https://arena.westsussex.gov.uk/web/arena/customer-charter-full>



*The Church is open daily
and all are welcome!*